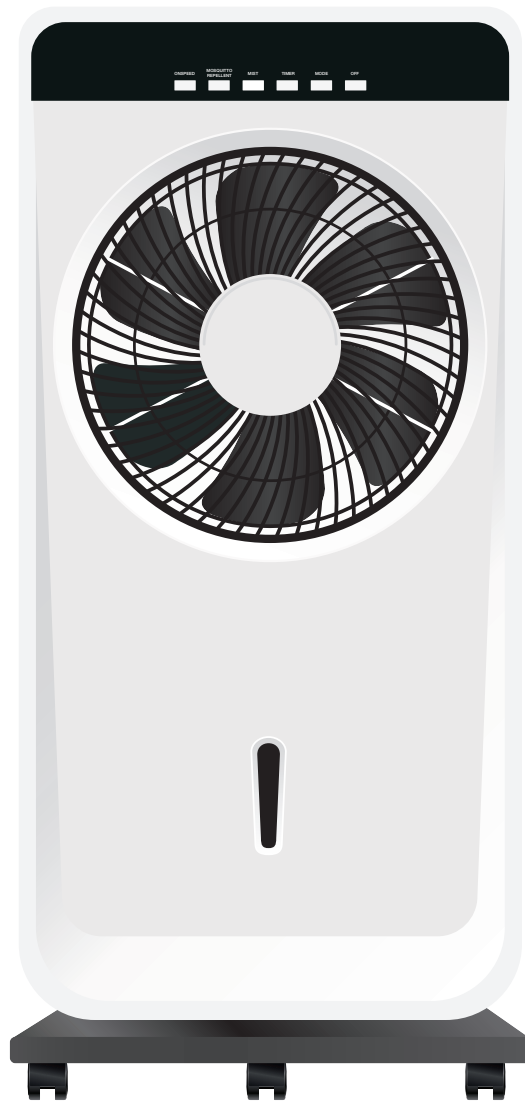


MAESTRO AIR

MISTING FAN

USER GUIDE



Please read these instructions carefully and keep for future reference

Please read these instructions carefully and keep for future reference.

Congratulations on your purchase of our product. We seek to excel by designing products with innovation, quality and safety in mind.

SAFETY INSTRUCTIONS

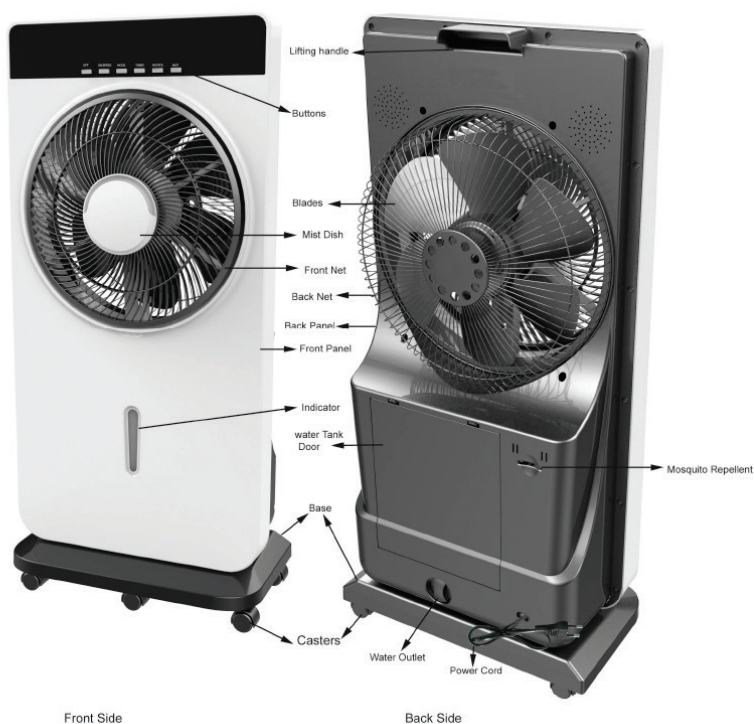
1. Do not place fan on any hot surfaces.
2. Do not place fan on any uneven surface.
3. Do not place fan on any surface covered with cloth.
4. Do not let fan cord overhang, ie overhang table edge.
5. Do not place fan cord, or power plug in or near water or liquid. Failure to do so may result in electric shock.
6. Do not spray any chemicals into the fan.
7. Always turn power off and unplug the fan from wall socket when fan is:
 - not in use;
 - moving the fan;
 - cleaning fan;
 - removing water tank (as water leaks out easily);
 - refilling or cleaning the water tank.
8. This fan is not intended for use by persons (including children) who are physically challenged, or not having read these instructions.
9. Close supervision is necessary when the fan is used near children or impaired persons.
10. This fan is not a toy.
11. Always keep fingers or any other objects clear of the fan during operation. Failure to do so may result in injury
12. Do not pull out plug from the power outlet with moist or wet hands. Failure to do so may result in electric shock.
13. Do not touch the atomizing plate during fan operation.
14. Water safety switch will automatically stop fan operation when the water tank is empty. Monitor tank water level during use.
15. Keep fan guard and mist spray vent clear of objects at all times.
16. Always fill water tank with water under 30°C.
17. Do not add fragrances or chemicals into the water tank as this may cause fan to malfunction.
18. This fan is designed for 240V ~ use only.
19. This fan is for household use only.
20. Do not operate the fan with a damaged cord or plug.
21. Do not use fan if it has malfunctioned or been damaged in any manner.
22. Fan repairs must be carried out by a certified and currently registered electrician only.

MIST FUNCTION

This product is suitable for diversified climatic environments. It can be used as a dry fan or a mist fan.

TECHNICAL SPECIFICATIONS

Model No.	KYTS30-3W
Rated Voltage:	220V~240V
Rated Frequency:	50Hz
Fan Power:	55W
Humidifier Power:	30W
Mosquito Repellent Power:	5W
Total Power:	90W
Max Mist Capacity:	250ml/h
Fan Size:	300mm
Water Tank Capacity:	1.8L

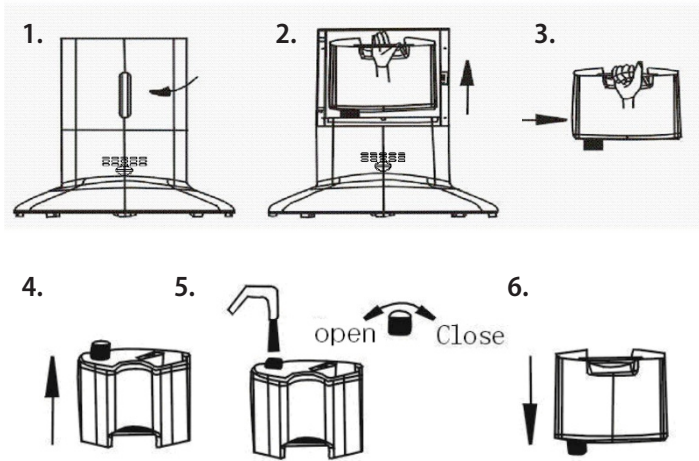


FREQUENTLY ASKED QUESTIONS

1. **Fan isn't working** Check fan plug is connected
2. **Fan vibrates** Check:
 - a. The rear guard is properly fitted
 - b. The fan blade cap is tight and blade is not damaged.
 - c. Rotate blade 180% to ensure its balanced
3. **Mist projector works but no mist spray** Check:
 - a. Water tank may be broken or cracked
 - b. For blockages in water line
 - c. If flume is full of water
4. **Mist projector doesn't work** Check water float is up and bobbing
5. **No indicator light on, no mist and no wind** Check:
 - a. Fan is connected to power and power supply is on
6. **No mist but indicator light is on and has wind** Check:
 - a. Tank has water
 - b. Water switch is on
 - c. Water float is up and bobbing

OPERATING THE WATER TANK

Place the mist fan on the ground and add water inside the water tank according to the six steps below:



Note: Do not remove water tank before disconnecting the power cord. Never use water above 30 C in the water tank.

TO FILL WATER TANK:

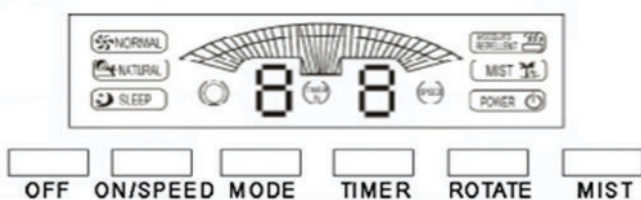
1. Open tank cover.
2. When removing tank, lift evenly to avoid spills.
3. Lift the water tank base up.
4. Unscrew tank cover.
5. Add water to tank, screw tank cover on tightly and return tank to fan. Close fan panel.

WATER HOSE

Always ensure the water hose connecting tank and fan is secured in position prior to any use of fan. Failure to do so may affect the proper functioning of the misting function.



OPERATING THE FAN

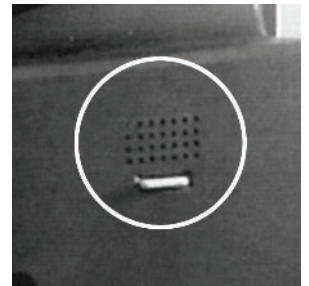


1. Connect fan to power, ensure fans power indicator light is on.
2. **BREEZE SPEED:** Press **ON/SPEED** button to select one of the three breeze speeds: Low, Mid, High.

OPERATING THE FAN *continued...*



1. Connect fan to power, ensure fans power indicator light is on.
2. **BREEZE SPEED:** Press **ON/SPEED** button to select one of the three breeze speeds: Low, Mid, High.
3. **BREEZE SPEED:** Press **MODE** button to select breeze function.
NORMAL: Regular breeze
NATURAL: Natural breeze
SLEEP: Breeze function changes from strong to mild.
4. **BREEZE DIRECTION:** Press **ROTATE** button to change breeze direction. To stop rotation, press **ROTATE** button again.
5. **TIMER:** Press **TIMER** button to select fan use. To select running time, press **TIMER** once for every hour of use. Examples: for 1 hour running time press once. For 8 hours running time, press button 8 times. The hours selected will illuminate on panel.
6. **MIST:** Press **MIST** button to activate water misting function.
7. **MOSQUITO REPELLENT:** Press **MOSQUITO REPELLENT** to activate this function. A mosquito repellent pellet must be inserted into the mosquito repellent dock. The tablet will vaporise and emit a repellent. Mosquito tablets are available from your local supermarket, usually found in the garden or pest control aisle. **NO PELLETS ARE INCLUDED IN THIS KIT.**
8. **OFF:** to turn fan off Press **OFF** button.
9. **FACTORY SETTINGS:** To return fan functions and modes to factory settings simply turn fan off.



REMOTE CONTROL USE: The remote must be directed towards the fans infrared port for proper function. To avoid remote control corrosion always remove remote control batteries during extended non use of fan.

KEEP REMOTE CONTROL WELL CLEAR OF CHILDREN AS BATTERIES MAY BECOME A HAZARD WHEN REMOVED FROM THE DEVICE.

CLEANING AND MAINTENANCE

- **ALWAYS** disconnect fans power cord from electrical socket.
- **ALWAYS** ensure fan has ceased operation prior to cleaning.
- For best results the water tank should be cleaned regularly.
- **ALWAYS** remove water tank for cleaning.
- For best results wipe clean tank and cup with a dry soft cloth. A mild detergent is suitable for cleaning and drying the tank and atomising cup.
- Lubricant may be added to fan shaft annually.

MAESTR  **AIR**

PRODUCT WARRANTY: 12 MONTHS

4 Pirelli Street Southport 4215

Freecall: 1800 616 248 | Email: info@maestroair.com.au